



Ness D8/16 Security System Driver Installation Manual

Contents

Introduction	3
Before You Begin	3
Setting up Security Panel	3
Setting up ELK-IP232 Interface.....	3
Installation	4
Driver Properties	4
Driver Actions.....	5
Driver Variables	5
Driver Connections	6
Things To Note	6
Release notes.....	6

Introduction

This Ness Security driver for Control4, supports most functions available on ness remote interface.

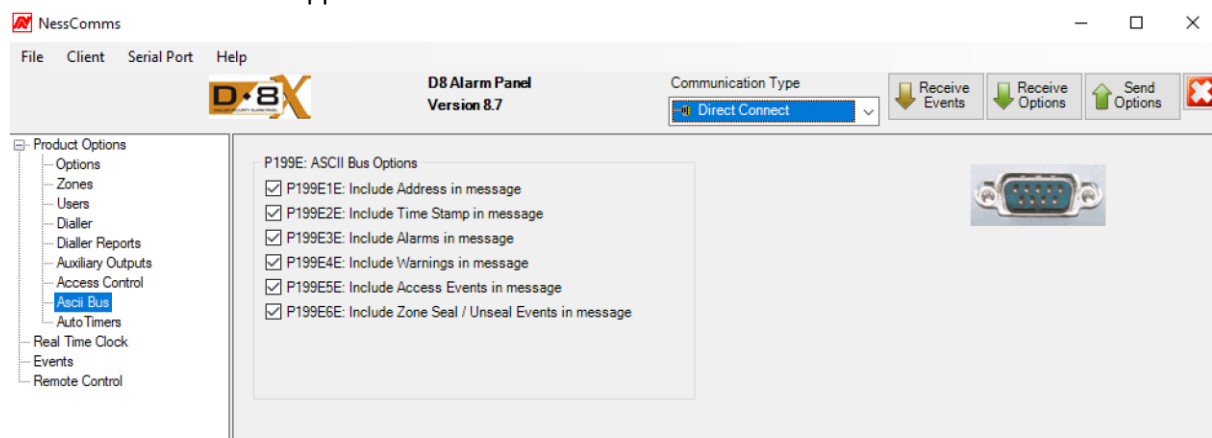
It is important to trial this driver before installing it at a customer's house, to understand the setup process, and the various ways to work with the driver.

Before You Begin

Before you begin trying to program/setup the driver, ensure that you have setup your Ness system in the required way. The driver supports connection to security system over RS232 and TCP/IP.

Setting up Security Panel

All options in "ASCII bus Options" (panel programming address "P199E") section **MUST** be enabled in order to establish successful communication with panel. At this time driver ignores panel timestamp but it will be used and supported in future releases.



Setting up ELK-IP232 Interface

If you are using an IP connection with ELK-IP232 ensure that it has been set on static IP(or DHCP reservation) and that baud rate has been set to 9600bps as D8/16 supports only this speed.

You will need to use the Ness IP232 configuration utility to do this.

Installation

Once you have placed the drivers in to 'Documents/Control4/Drivers' on your computer, you will be able to find them within Composer's driver search tab. From the manufacturers drop down menu, select 'Ness Corporation' and this will list the available drivers.

Driver Properties

License Status – Displays last message from license server. (License authorized is what we want to see here)

License Key – This is where you paste license key received from BlackWire Designs

IP Address – security panel IP address

Port – security panel port number (default 2401)

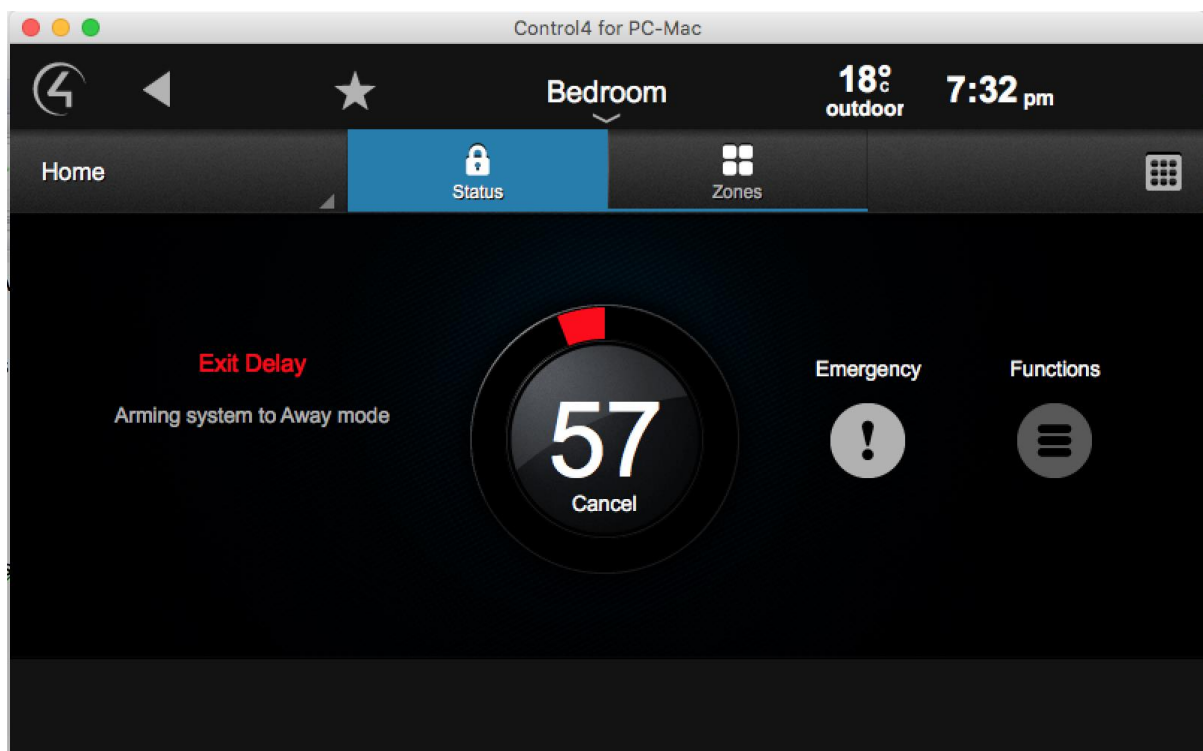
Connection status – IP connections status between controller and security panel.

Number of active Areas – Panel interface does not support query area command so they need to be entered manually, D8/16 supports two areas.

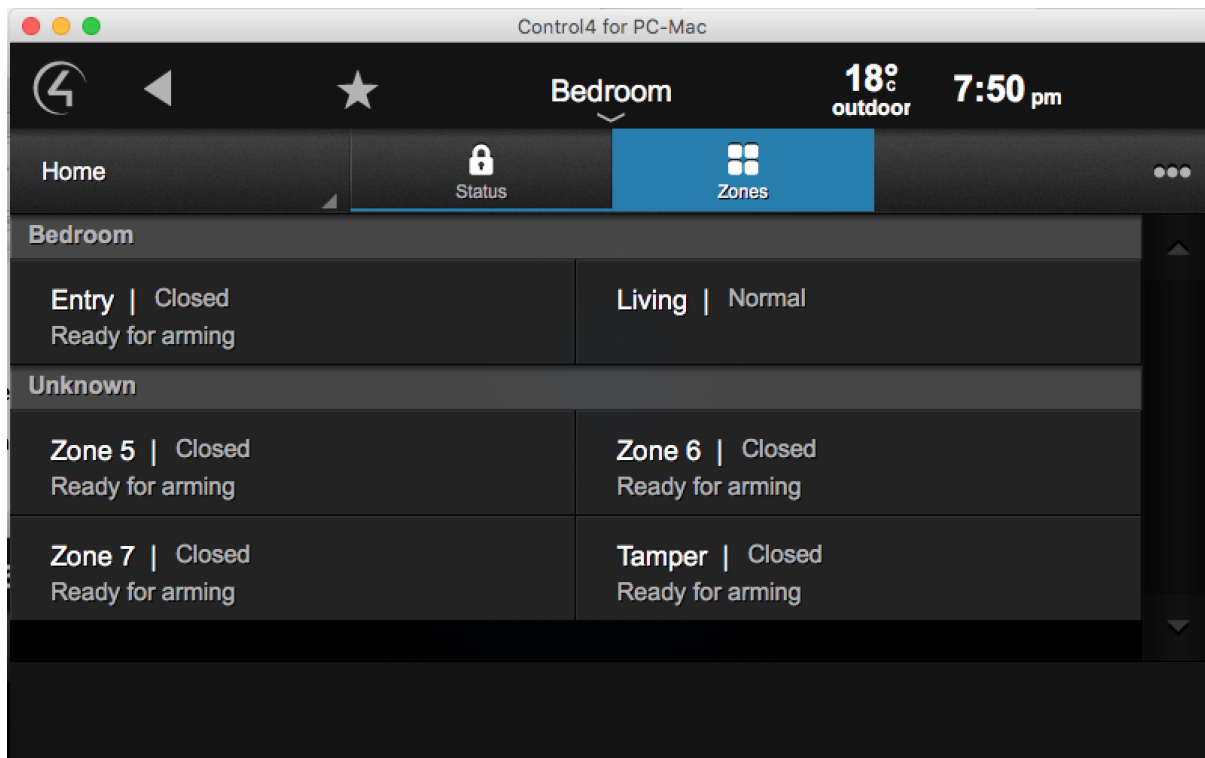
Number of active Zones – As in previous case number of zones needs to be entered manually.

Code Required for Arming – Specifies if user code is required for arming the system, this is common for all areas

Area EXIT/ENTRY Delay – Values are in seconds and represent delay for arming and disarming each area it will define how long count down control4 UI will show.



Area 1&2 Zones - this is comma separated list of zones for each area.



Driver Actions

Request SW Version – this will request panel software version

Request Area Status – this will request status of all areas

Request Zone Status – this will request status of all zones

Request Output Status – this will request status of all aux outputs

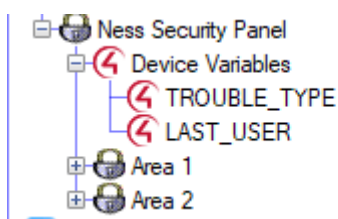
Driver Variables

LAST_USER – This variable will store the ID of the last user who Armed/Disarmed the system.

User 57 = Keyswitch

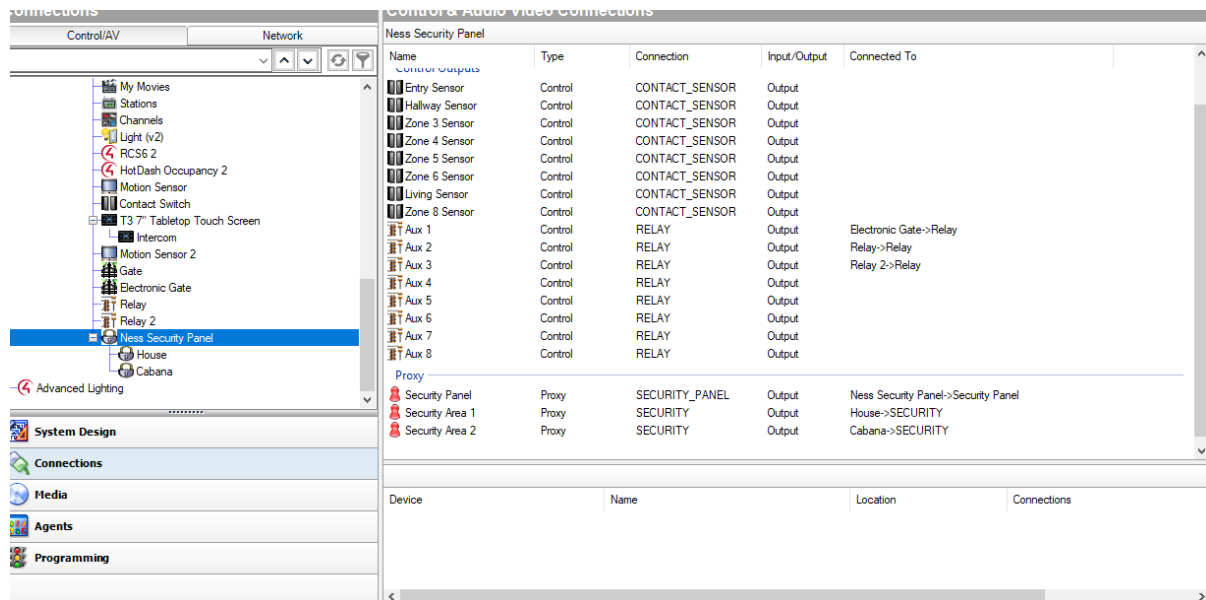
User 58 = short/quick arm (arming without a pin code)

You could use this variable on the ARM/DISARM events of the areas and then check which user ID was used to do different programming per user, or to event send push notifications.



Driver Connections

Driver supports output contact connection for each zone and output relay connection for auxiliary outputs 1-8. Outputs of the security system can be controlled through those connections.



Things To Note

The Arming/Disarming of areas is based on the User Code used. This needs to be setup in the Ness panel. For example if a user code is setup for Area 1, even if you use it on Area 2 in the Control4 UI, it will arm/disarm area 1.

User codes can be programmed for Area 1 or Area 2 or both areas. Please read through the Ness Installation manual for more help.

Release notes

- | | | | |
|--------|---|------------|--|
| V1.0.0 | - | 2.10.2018 | -initial release |
| V1.0.1 | - | 9.10.2018 | -fixed events for areas (when area armed, disarmed ...)
-implemented aux 1-8 control |
| V1.0.6 | - | 18.05.2022 | -fixed zone reporting on zones > 10
-fixed reconnection on connection time out (affected OS 3.1+ only)
-fixed Dismiss Alarm issue on iOS app
-added variable storing last user to arm/disarm
-fixed activating panic from Control4 |