



UniFi NVR Driver

Installation and Usage Guide

Updated: July 30, 2017



Table of Contents

Overview.....	3
Features	3
Change Log.....	3
NVR Configuration.....	3
Enable API Access.....	3
Find RTSP URL (RTSPRUI field in driver)	5
Get the Camera ID (ID Field in driver)	5
Adding the driver to your project	5
FAQ.....	6

Overview

This driver allows you to integrate UniFi's NVR into the Control4 Navigators. The driver allows viewing of video only

This table lists the Control4 interfaces that are supported by this driver

Control4 Interface	UniFi NVR Camera
Flash Navigator <small>HC Controllers, MyPC App, non-T3 Touchscreens</small>	
Android Navigator <small>EA Controllers & T3 Touchscreens</small>	
Mobile Apps <small>Android & iOS</small>	

Features

- Allows viewing of UniFi NVR Cameras on the Control4 Navigator

Change Log

02/04/17 – 1.0.1

- Initial Release

07/29/17 – 2.0.0

- Support for BlackWire Designs Licensing

NVR Configuration

Note: must be on UniFi Video NVR firmware 3.2 or later.

Enable API Access

1. Log into the NVR and go to the User section
2. Enable API usage for a user and copy the API Key

UniFi VIDEO

ADMIN

CAMERAS

MAP

LIVE VIEW

TIMELINE

RECORDINGS

3.2.2

ALERTS

USERS

SETTINGS

ADD USER

NAME	USERNAME
Website Snapshot	websitesnap

websitesnap

Full Name: Website Snapshot

Last Logged In: 2016/05/21 19:26:10

Usergroup: WebsiteSnapshot

Last IP Address:

ACCOUNT

API ACCESS

DELETE

Allow API Usage

ON

API Key

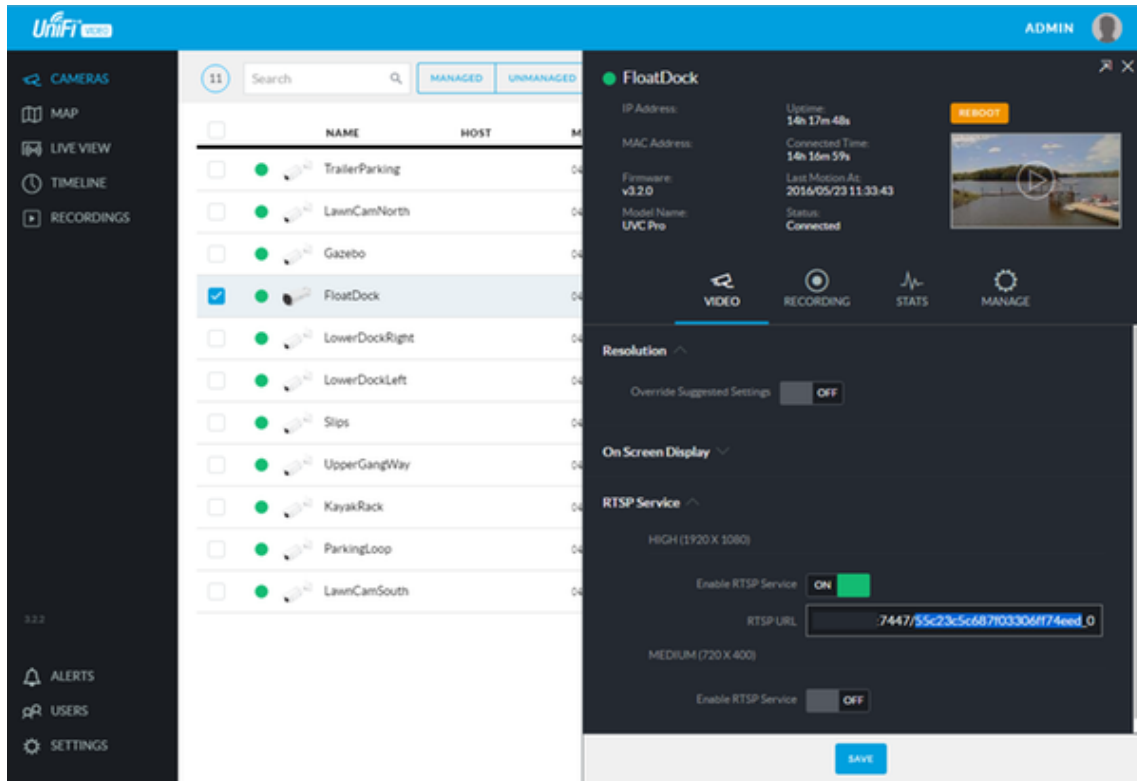
grwkNQ1zP4tIsT0

NEW API KEY

SAVE

Find RTSP URL (RTSPURI field in driver)

1. Login to the NVR
2. Select a camera
3. Enable RTSP Services



4. Copy the RTSP URL into the RTSPURI field. This is everything after the / in the RTSP URL field

Get the Camera ID (ID Field in driver)

1. The Camera id part of the RTSP URL. It is the portion after the / and before the _.
- For example if the rtsp URL is rtsp://ip:port/588639f8e4b0fc25aa21b264_2
Then the camera id is the highlighted portion.

Adding the driver to your project

1. Add driver to Library\Documents\Control4\Drivers directory.
2. Launch the Composer Pro application and connect to your project
3. In the 'System Design' page select the 'Search' tab on the right hand side.
4. Select 'Camera' as the device type.
5. Double click on 'UniFi NVR' to add to the camera
 - a. Note: you will need 1 instance per camera on the NVR
6. In the driver properties select the correct selling store and enter the correct license key.

Store	Blackwire Designs ▼
License Key	JhIOGDf6j0
License Status	Trial License Verified [47 hours left]

- a. Note: if you are using HouseLogix enter “trial” as your license key to start a trial
 - b. If you are using Blackwire, please contact them for a trial key which will be valid for 1 week.
7. The IP should be the IP of the NVR
8. The RTSP port should be the RTSP port from the RTSP URL (Generally 7447)
9. The HTTP should be the port you connect to the NVR on (Generally 7080)
10. Enter the fields as documented in the NVR Configuration section
11. Repeat for each camera

FAQ

COMING SOON